



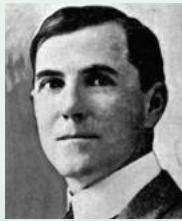
A Message From Our President

by Glenn Nohara

UNIVERSITY OF HAWAII COLLEGE OF ENGINEERING CELEBRATES 100 YEARS. This year marks the centennial anniversary of the UHCOE. Starting in 1908 as the College of Agriculture and Mechanic Arts, the College of Engineering has graduated over 9,000 engineers over the past 100 years. Our company has 16 UHCOE alumni.

I was part of the Centennial Homecoming Event committee that planned a celebration party held at the UH Stan Sheriff Center on October 7. In doing some research about the College of Engineering's history as part of this event, I came across some interesting information about our former Deans that I would like to share.

John Mason Young, Dean of Engineering 1908-1920 and Father of Engineering Education in Hawaii. Young's 1909 plan for the new college was indeed visionary and included provisions for future schools of law, medicine, veterinary science, and architecture.



Arthur Ripont Keller, Dean of Engineering 1920-1947. Keller is associated with much of the University of Hawaii Manoa's and the City of Honolulu's infrastructure planning and development.



Wilfred Jay Holmes, Dean of Engineering 1947-1965. Holmes, a U.S. Naval Academy graduate, served under Chester Nimitz during WW II as an intelligence officer decoding Japanese radio



...continues on page 3



Project Highlight

The Westin Princeville Ocean Resort Villas

by Andy Ragasa



Located within the community of Princeville on Kaua'i's North Shore is the recently completed Westin Princeville Ocean Resort Villas. The Starwood Vacation Ownership property lies along a lush cliff gracefully poised 200 feet above Hawai'i's famous 'Anini Beach. The 4-star resort boasts spectacular views whether you are looking out across the sparkling Pacific Ocean or towards the canyons and towering cliffs of the Na Pali coastline. Bordering the resort are Princeville's world-acclaimed championship golf courses, The Prince and The Makai, both of which have earned a spot on the prestigious Golf Digest's "America's 100 Greatest Golf Courses" list.

The Westin Princeville Ocean Resort Villas features 173 two-bedroom villas in seven two-story and three-story buildings, four pools, three whirlpools, a kiddy pool with slide, a two-story clubhouse, a fitness center with steam room and sauna, a signature restaurant



The Westin Princeville Ocean Resort Villas main pool and clubhouse

(Nanea Restaurant & Bar) and even a general store (Princeville Market). It also has a two-level parking structure that was constructed below grade to help minimize the visual impact to surrounding properties.

This is Starwood's third vacation ownership resort in Hawai'i, continuing the company's rich 60-year tradition in the Hawaiian Islands. The \$135M project officially broke ground on April 28, 2006 although Koga Engineering & Construction, Inc. along with general contractor Unlimited Construction Services, Inc. got started with preparatory work as early as December 2005 including the reconstruction and beautification of Wyllie Road leading into the 18.5 acre oceanfront property. Construction immediately followed on the main project site as the Koga Team led by **Jordan Kahananui** (Project Foreman) and Honolulu transplants **Herman "Tosh" Hamada** (Project Manager) and **Lee Iboshi** (Project Foreman) diligently took on "The Challenge."

The Challenge...of yet another major Princeville project, three within the past two years, Queen Emma's Greens Subdivision &



Grade checker Peter Morishige demonstrates the use of horizontal restraint system at sewer line excavation as Lee Iboshi (excavator operator) completes setting a trench shield

...continues on page 2

Safety

by Kristi Koga

A recent article in the *Safety Daily Advisor* (an online safety resource) spoke about safety in the context of **TEAMWORK**. Here is an excerpt from the article.

"Teamwork is a beautiful thing to see. When players work as a team, they usually win. When they don't, they often lose. The same holds true for safety in the workplace—when employees work as a team, everybody stays safe. When they don't, accidents and injuries occur.

You may supervise a group of employees, but that doesn't necessarily mean you supervise a team. There's a big difference between a group of people who happen to work side by side and a team that works together. **Here are some essential characteristics of a team:**


Shared mission. On sports teams, players focus on scoring and winning. On work teams, your employees should focus on identifying hazards, working safely, and preventing accidents.

Commitment to same goals. To keep safe on the job, workers have to understand safety goals and commit to achieving them. Everybody has to work together toward the same goals to achieve success and prevent injuries.

Participation. Effective team players don't sit on the sidelines or the bench. The same is true on the job. Get employees involved in safety programs and in efforts to improve workplace safety.

Interdependence. Team members depend on one another to identify hazards, follow safety procedures, and prevent accidents.

Communication. Because team members are interdependent, they are constantly communicating, sharing information, giving warnings, reinforcing safe behavior, and talking up safety."

Teamwork takes effort on everyone's part! 

Project Highlight

...continued from page 1

Ka'iulani of Princeville being the other two. Kama'aina know that Princeville is synonymous with "Rain", an element of Mother Nature that does not bode well with sitework construction. And rain did we have, sometimes days and weeks on end! The project's schedule could not be compromised however, so the crew took it upon themselves to work through the 'ua li'ili'i (mist, drizzles & scattered showers). Only in torrential downpours and/or extreme muddy conditions did they decide to call it a day. When there were few stretches of sunny periods, there was no questioning; the crew would put in 10-hour days and Saturdays.

The Challenge... of respecting the concerns of the neighboring residences and surrounding establishments.

Wyllie Road, all 2000+ feet of it, being the only ingress & egress to & from the project site, is lined with existing residential townhouse complexes.

Construction traffic including hauling & delivery trucks would

constantly traverse Wyllie Road from the onset. With the unimproved conditions, mud & dust became nagging nuisances. We employed two full-time water trucks to handle the situation and the capacity of the crew's best management practices (BMP's) were tested to the limit and they succeeded! It is fitting at this time to take the opportunity to thank the management and residents of Ka Eo Kai, Mauna Kai and Puamana for bearing with us throughout the duration of the construction period.



Birdseye view of the Westin P.O.R. Villas – January 2008

The Challenge... of installing underground utility lines in excess of 10-15 feet deep which, although may not sound like much, still required the latest in safety training and equipment to prevent trench cave-ins, even more so due to the soils being over-saturated from the rains. This Koga team was also the first to reinstitute the use of horizontal restraint systems while working near or at an excavation. As an outcrop of our company's Deming-based philosophy, the team spent many hours planning, acting and studying this safety requirement along with implementing the protective devices and following through with its flawless use in the field. Hats off to **Tosh** and our safety consultant, **Ken Grote**, for taking the lead in training the crew and also to the crew for diligently pioneering the process as we strive to provide a safe workplace environment for our employees.

Today, nearly three years after the first ounce of dirt had been turned, the doors stand open for guests to unwind at the end of each action-packed day amid inspired surroundings at The Westin Princeville Ocean Resort Villas. Most of them do not and need not know of the challenges it took to get to this point, which from our perspective makes it all the more worthwhile!

Congratulations to **Unlimited Construction Services, Inc.** and all its subcontractors for a job well done. We would also be remiss not to congratulate and thank the entire **Koga Engineering 'Ohana**, from the Big Island to O'ahu to our beloved Garden Island of Kaua'i, who were involved in one way or another with this successful project. Last, but not least, congratulations to **Starwood Vacation Ownership** and best wishes to the success of your resort. We look forward to working with all of you again in the very near future.

Until next time, *'a hui hou malama pono...* 

Koga Jobs

Oahu Current Projects General Contractor / Client

- Kaiser Moanalua Medical Center McCarthy / Kiewit JV
- Hilton Hawaiian Village
 Waikikian Tower. Dick Pacific Construction Co., Ltd.
- Trump International Hotel & Tower Albert C. Kobayashi, Inc / Kiewit JV
- Pier 51 Waterline Hawaiian Dredging Construction Company, Inc.
- Royal Hawaiian Hotel Renovations. Swinerton Builders
- HRSOC Dick Pacific Construction Co., Ltd.
- HRT Medical Building Kiewit Building Group

Kaua'i Current Projects General Contractor / Client

- Kukui'ula Plantation Core Linthicum Custom Builders, LLC
- Kapa'a Homesteads 0.5 MG Storage Tank Kaua'i Builders, Ltd.
- St. Regis Princeville Hotel Unlimited Construction Services, Inc.

Big Island Current Projects General Contractor / Client

- Hilo Judiciary Building. Swinerton / Pacific JV
- Large Cesspool Conversion Department of Human Services
- Target Kona Dick Pacific Construction Co., Ltd.
- Circuit City Kona Maryl Pacific Construction, Inc.

Maui Current Projects General Contractor / Client

- Honua Kai Lot 4 Kaanapali Ledcor Construction, Inc.
- Honua Kai Ph II Ledcor Construction, Inc.



Maui crew widening Honoapiilani Highway for the Honua Kai project



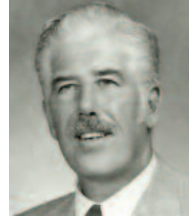
Tosh Hamada demonstrating the Horizontal Restraint system that his team developed at the Westin Princeville Ocean Resort Villas

President's Message

...continued from page 1

transmissions. He was also a successful fiction writer, under the pen name Alec Hudson, publishing many stories on submarine warfare.

John Wallace Shupe, Dean of Engineering 1965-1980. Shupe was stationed in England during WW II and flew missions over Germany as a B-17 flight navigator. In a flight over Leipzig, he suffered near-fatal injuries and for that he received a Purple Heart and a Distinguished Flying Cross. He had a mission of promoting alternative energy sources and was influential in the 1974 founding of the Hawaii Natural Energy Institute.



This is just a sampling of colorful information that can be found on the UHCOE Centennial website at <http://www.eng.hawaii.edu/centennial>. Be sure to click on the link to the booklet "College of Engineering Centennial History Book (1908 / 2008)" written by Nancy J. Morris, PhD. A wealth of historical and current information about our wonderful college can be found there.

Until the next Koga Report, work safely.



Koga Golf Tournament Winners: GOLD – Glenn Nohara and Lori Isara, SILVER – Alvin Fujioka and Clay Asato, BRONZE – Jits Kunioka and Jason White



Koga kids – back L to R Brisán and Kori Kunioka, Erin Okazaki, Drew Ogomori, Reyn Nakagawa; front L to R Alyssa Nakagawa, Riley White, Kellen Sakaitani, Dane Isara

KOGA REPORT

The Newsletter of
Koga Engineering & Construction, Inc.

Volume 19, Number 4 • October 2008
Phone (808) 845-7829 • Fax (808) 845-3742
www.KogaEngineering.com • info@kogaeng.com
Lic.#ABC6826

An Equal Opportunity Employer

KOGA
ENGINEERING & CONSTRUCTION, INC.

P.O. Box 31289
Honolulu, Hawaii 96820

October 2008

Think Sitework... Say Koga!

Koga Bits & Pieces

Welcome to the Koga Ohana!



Janel Haberman

Hello, Koga Ohana! Most of you have already met me in the past year or so when I first began my internship with Koga Engineering & Construction, Inc. in the summer of 2007. Since then I have graduated from the University of Hawaii with my Bachelor's Degree in Civil Engineering, spent a month in Europe, and then stepped on board as a Project Engineer in July of this year.

I was delighted when Glenn extended the opportunity for me to stay on full-time after graduation. I had to accept after reflecting on everything that the great people here had to say about the company and how it fit in with my outlook for the future. When I was in school, I worked for six years as a cashier at a small, independently owned auto care center, so Koga's informal family-style atmosphere is something I can appreciate. The company's technical abilities, philosophies and management style are only some of the factors that make it such an attractive place to develop my career with.

I am a fourth-generation Oahu "townie" who graduated from McKinley High School. I love living in Hawaii and I tend to either go hiking or to the beach every weekend. I also enjoy participating in activities with my church and exploring new things. I just might even explore golfing... (someday)!

Congratulations to the Koga Ohana!

New Parents

Aaron (Kaua'i Mechanic)
and Melissa Kupihea

Baby Boy Twins; July 9, 2008

Kimo Naino Takeo Kaleialohalalani Kupihea
21", 7 lbs 3 oz

Kawika Takara Kahanuolalani Kupihea
20½", 7 lbs 7.6 oz



Condolences to the Koga Ohana on the recent passing of:

Sosei Aniya, father of Danny Aniya (Oahu Equipment Manager)
July 2008, age 95

Dorothy Murakami, mother of Steve Yoshikawa (Estimating Assistant)
September 2008, age 91



Koga Foreman, Bryant Akiona,
as escort for the Island of Molokai
in the Aloha Week Parade.